

# CITIZENS VIEW

Public Safety  
Quality of Life  
Property Values

Focus-Marijuana

DEC  
2017

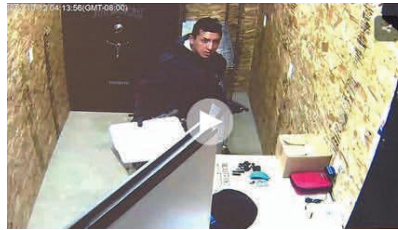


SHIRLEY MORGAN  
B.A., M.A., M.S., A.G.L.

DIRECTING  
SAFE DRUG POLICY

## THIEVES USE POWER TOOLS, SLEDGE HAMMERS, TO STEAL LEGAL POT

**BORING, Ore.** — Deputies are searching for at least three men who broke into a state licensed recreational marijuana growing facility early Tuesday morning using sledgehammers and power tools.



The theft occurred around 2 a.m. at a marijuana growing community outside of Boring.

The landlord, who asked us to use only his first name, Brad, said the men drove a dual-wheeled truck on a private road on an adjacent property. He said the men cut barbed wire fencing and used power tools and sledgehammers to smash through walls.

"They brought a lot of power tools and cut right through the steel," Brad told KATU. "They came into the

back walls of the buildings to avoid the primary cameras."

Brad says he believes the operation was planned.

"They knew where to go, they knew where to drive in, they knew where to access our property without being seen," Brad said. "They thought if they could cut a hole in the back of the buildings that they could get in and out without being seen or heard."

The Oregon Liquor Control Commission has stringent security measures to prevent crime at these facilities.

Sites must have security cameras installed inside

and out, in every room and at each doorway. The cameras' data must be store on- and off-site. In addition, facilities must be physically secured and doors must be reinforced by steel.

Brad says the facility meets and exceeds all of OLCC's requirements.

"It's frustrating," he said. "We're not big players. We're just small people who own small businesses trying to make it work."

The suspects successfully entered six buildings, smashing or disturbing security cameras as they moved.

Brad said they damaged most of them except one that was tucked away in a corner. The room's light was accidentally left on, which captured a clear image of one of the suspects.

10770 SE 362nd Boring

### SAVE THE DATE



BY  
INVITATION  
ONLY

"I learned more in two days about marijuana than I ever did in my entire career on the bench as a Judge."

# TROUTNER FARMS LLC OWNER LEASES BUILDINGS TO GROW POT



## NEIGHBORS WRITE PRESIDENT TRUMP SAY PLEASE ENFORCE FEDERAL LAWS

My name is Sherri Markham. My husband and I have lived in rural Boring Oregon since November 1989, almost 27 years. We moved from Gresham to live and have our horses with us.

Up until January 2016 we lived next to a tree nursery located in an EFU zone exclusive farm use which is farmed under Oregon's "Right to Farm" Act. When pot became legal to grow in Oregon, a large commercial marijuana grow operation began without our knowledge. The pot farm has destroyed our livability.

The access road to the pot farm runs up the south side of our property and across the back. Daily approximately 50-60 cars fly up and down the gravel access road which has 5 MPH speed signs posted which means 30-55 MPH to pot growers. That does not include cars and trucks throughout the night or semis and other commercial vehicles, 24 hours a day, 7 days a week, 365 days a year.

What was once was a tree nursery has turned into a non-stop source of noise, weird smells, and pink lights visible from our backyard, dumping their spent soil along our fence line and traffic. We can no longer use half of our almost 7 acres and can only safely put two of our horses on 1-1/2 acres behind

the barn since pot growers take great joy in scaring the horses. Until the commercial marijuana grow operation came to be, you could hear a pin drop at night, it was so quiet. Brad Troutner, the owner of the pot grow has 30 metal buildings on site with an application for an additional 24 buildings that he is leasing out to pot growers, turning this once quiet farming community into an industrialized marijuana grow operation. <http://growunits.com/index.html>

After 14 months of no sleep or peace I had had enough and had installed an UNWANTED POT GROWS.COM sign that was put in our front field on May 7, 2017.

Within an hour someone sent a picture to Brad Troutner who came onto our property to confront us on what we had done. There was a lengthy discussion which included him saying he was unaware of problems (my husband had spoken as recently as April 11, 2017 to his brother). Brad Troutner informed us that we might be putting ourselves in harm's way having the sign point to his access road. He didn't believe the problems we were and still are experiencing. I pointed out that I had recently been keeping a log with dates, time, and descriptions of the cars, trucks and even semi's. Pot



grower's park along the fence line at night and have gab fests and arguments and play loud music in addition to the speeding. There are "NO PARKING" signs that Brad Troutner had to put up per Clackamas County codes that are ignored. My husband and I were told that growing marijuana is no different than growing lavender or tomato plants.

I find it interesting that in all the years we have lived here that the property when it was a tree nursery did not create an inconvenience during their planting, growing and harvesting unlike the pot growers who go 24/7, 365 days a year. We own our property, we pay our taxes but we don't have any **RIGHTS**. I really want someone to explain why we have no rights. According to Clackamas County and the OLCC they have all the rights with no restrictions. I want someone to explain why there is nothing short of moving we can do. I can only imagine what this has done to our property value. Brad Troutner and the other Pot Growers do not live on site, they do what they want, when they want and leave. We ask that you please enforce our federal marijuana laws. Thank you for your time.

**Sherri Markham**  
**Boring,OR**

# COMMERCIAL POT GROWERS TAKING OVER THIS ONCE QUIET EXCLUSIVE FARM USE RURAL COMMUNITY



**\$1M heist: They were carrying weed out with a cop here**

<http://koin.com/2017/11/03/oregon-genetics-marijuana-warehouse>



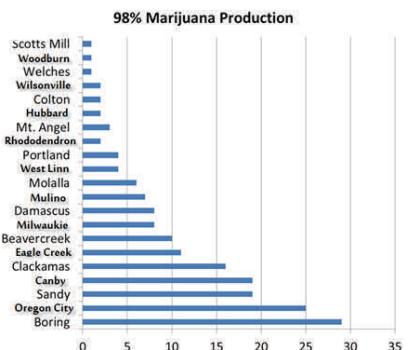
## QUALITY OF LIFE - 352 Commercial Pot Land Use Applications –Citizen Complaints

It is being touted that Clackamas County land use regulations are being used as a model for other counties, yet their land use regulations are the most liberal in the State and have opened up the door for commercial marijuana growing in almost every zone in the County. <http://www.clackamas.us/planning/marijuana.html>

Pot growers have little respect for the environment or the surrounding neighbors. Many are cutting down all of the trees and many of the properties are surrounded by smaller lot rural residential land owners who now will be greatly impacted by these large outdoor pot grows. Pot growers, wholesalers, proces-

sors and retailers are taking over complete areas in our rural residential communities. In Boring Oregon of the 188 marijuana land use applications over 20% has targeted various areas of our rural residential farming community to set up their pot industry. In a 3 mile radius 5 commercial pot grows many unknown medical marijuana grows, butane hash oil processing center and 2 marijuana wholesalers. Outrageous! As you can see from the chart, the unincorporated area of Boring has been overrun with pot production facilities impacting the communities, public safety, quality of life, and property values.

### CLACKAMAS COUNTY-OREGON





**P. O. Box 1351  
Welches, Oregon 97067**



**Consultant, Trainer, Speaker**

Building partnerships between citizens and government officials to help develop safe drug policies.

<https://www.youtube.com/watch?v=uTLLUKsbyaY&feature=youtu.be>

## CONNECTIONS

- **Monthly Connections**
- **Quarterly Citizen View Newsletter**
- **Quarterly Community Educational Forums –Focus Marijuana**
- **Annual Nat'l Safe Drug Policy Summit-Focus Marijuana –April 17-18 2018**
- **Web Trainings**
- **Small groups meetings**



We believe we are socially responsible for preserving public safety, quality of life, and protection of property values on behalf of our communities and for the legacy of our children.



Copyright © 2015 by Shirley Morgan  
Produced in Oregon

# Clackamas County Oregon Oregon Pot supplier arrested in Nebraska for trafficking \$1.1 mil in pot extract

**LANCASTER COUNTY** – The Lancaster County Sheriff’s Office stopped a vehicle on Interstate 80 containing \$1.1 million worth of THC shatter, and \$440,000 worth of pot.

LSO stopped two vehicles near mile marker 401 on Tuesday around 2 p.m.

Inside one of the vehicles, which was a U-Haul van, deputies found 25 pounds of THC shatter, a large amount of hash oil, and \$400,000 worth of marijuana.

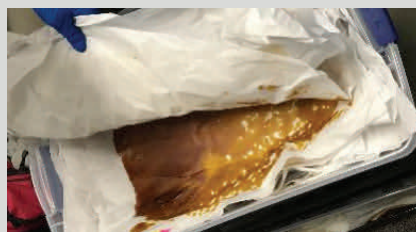
LSO arrested and lodged Richard Wilkinson, 36, of Oregon, for



possession of marijuana with intent to deliver, and John Carlson, 50, for aiding and abetting the possession of marijuana with intent to deliver.

Wilkinson was driving the U-Haul van, and Carlson was following him in a separate vehicle.

Wilkinson said he was transporting the drugs from Oregon to another state where it is legal to manufacture marijuana.



An Oregon man who runs a cannabis extract shop in Clackamas was arrested in Nebraska after sheriff’s deputies found \$1.1 million worth of product in his U-Haul van. (AP photo by Chris Dillmann/Vail Daily)



7808 SE Hwy 212 Suite 313  
Clackamas, Oregon

<https://richextracts.com>

[http://www.oregonlive.com/washingtoncounty/index.ssf/2017/11/oregon\\_man\\_arrested\\_nebraska\\_cannabis\\_extract\\_marijuana.html](http://www.oregonlive.com/washingtoncounty/index.ssf/2017/11/oregon_man_arrested_nebraska_cannabis_extract_marijuana.html)